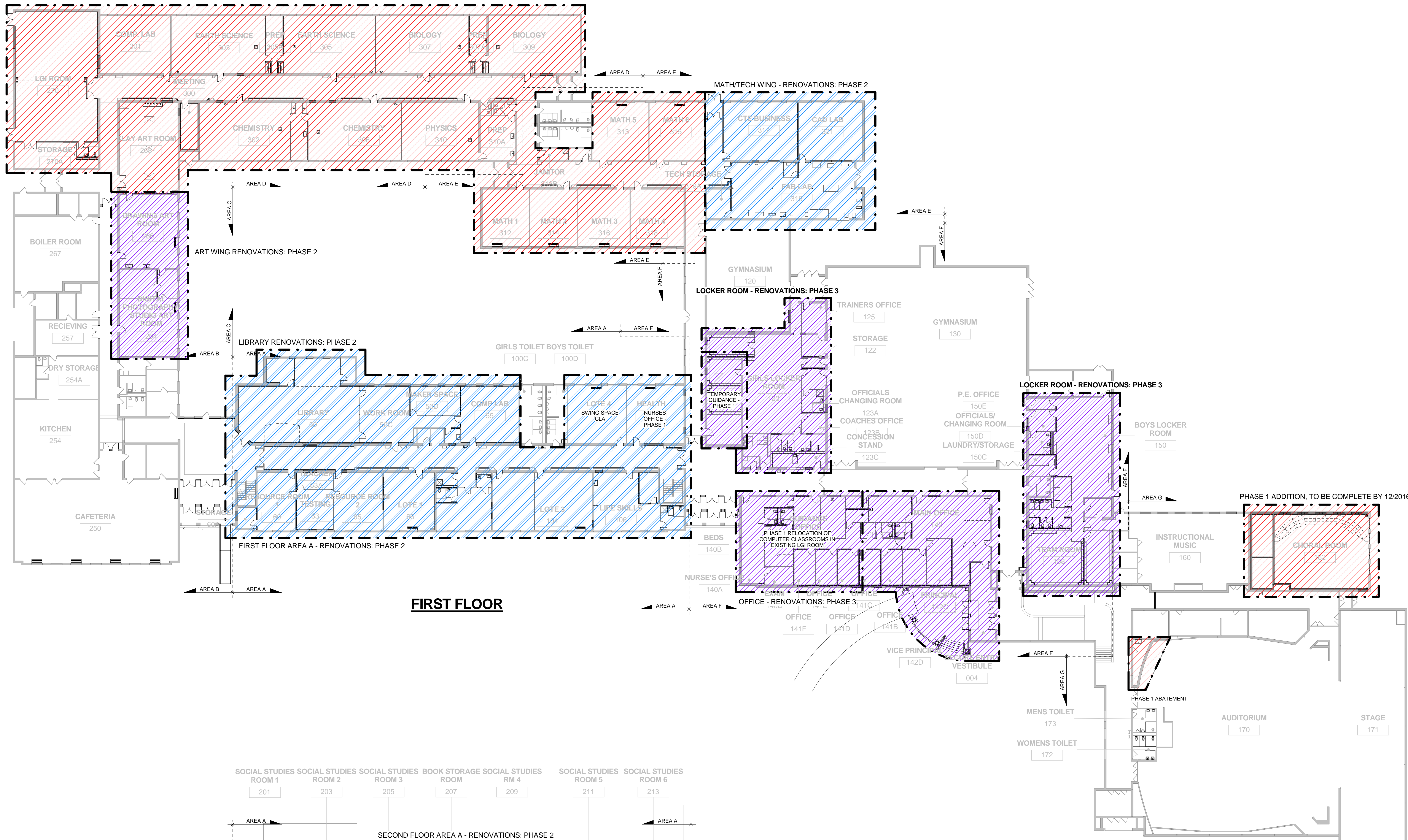
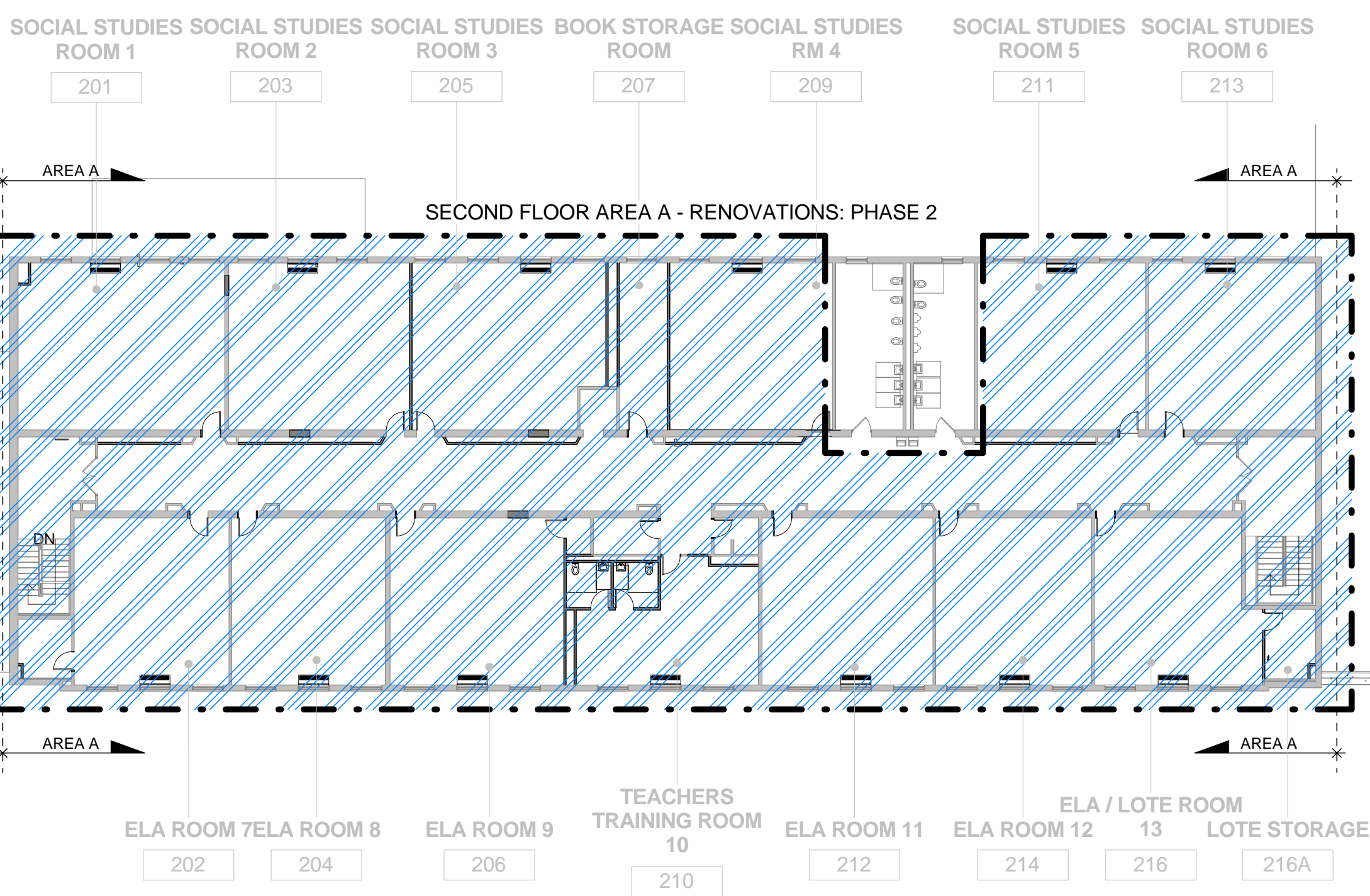


LGI / SCIENCE WING - RENOVATIONS: PHASE 1



**FIRST FLOOR**



**SECOND FLOOR**

**PHASING LEGEND  
RENOVATION AND HEATING SYSTEMS**

**ARCHITECTURAL**

- PHASE 1  
JULY 2016 - FEBRUARY 2017
- PHASE 2  
MARCH 2017 - SEPTEMBER 2017
- PHASE 3  
OCTOBER 2017 - MARCH 2018
- ARCHITECTURAL RENOVATIONS

**OTHERS**

- RENOVATIONS BY OTHERS

**PHASING PLAN**  
1" = 20'-0"



**design group**

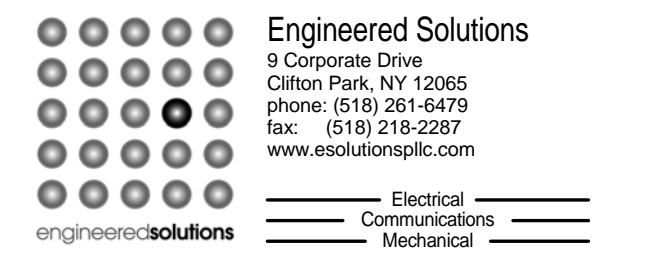
ARCHITECTURE • PLANNING • CONSULTING  
234 MILL STREET SUITE 205  
ROCHESTER, NY 14614 ALBANY, NY 12205  
p 585.442.7010 p 518.435.2467  
f 585.442.7019 f 518.435.2469



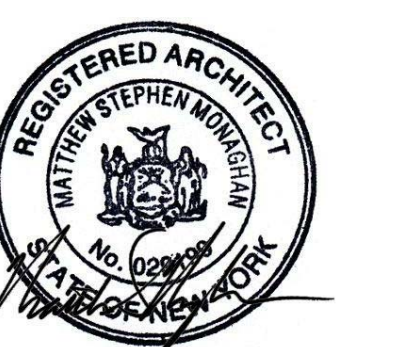
44 Glenridge Road • Whitesboro • NY • 13492  
Ph: 315.264.0283 • Fax: 315.362.9583



453 Dixon Road, Suite 7, Bldg. 3  
Queensbury, New York 12804  
(518) 761-0417, FAX: (518) 761-0513



9 Corporate Drive  
Canton, NY 13615  
phone: (518) 261-6479  
fax: (518) 219-2837  
www.esolutionspc.com



It is a violation of Title VIII, Article 147 of 1955 Education Law for any person, unless acting under the direction of a licensed architect, to alter any item on this document in any way. Any licensee who alters this document is required by law to affix his or her seal and the notation "altered by" followed by his or her signature and a specific description of the alterations made.

Key Plan

Title  
**MARCELLUS CENTRAL SCHOOL DISTRICT  
2015 CAPITAL IMPROVEMENTS PROJECT**  
SED Control No.: 42-11-01-06-0-005-019

SEI Project No.	15-3019	
Date	09/15/2015	
Drawn By	SEI	
Checked By	MSM	
Scale	As indicated	
Revisions:		
No.	Description	Date

**PHASING PLAN**

BUILDING: DRAWING NUMBER:  
**HS A0.01**